

# UNDERGRADUATE

WELCOME  
GUIDE  
2018



# Hello and welcome

**"I want to welcome each and every one of you to Warwick. You are now automatically a member of Warwick Students' Union – whatever your interests, passions or priorities, we are here FOR YOU during your time at university!"**



Warwick Students' Union is a democratic membership organisation, separate from the University, which represents the interests of all 25,000+ students at the University of Warwick.

We provide great food, drink and entertainment services for you to enjoy whilst here at Warwick. Namely The Bread Oven, Curiositea, The Dirty Duck, The Terrace Bar, Xananas restaurant and The Copper Rooms nightclub. As we're a not-for-profit charity, all the money that is spent in these outlets are directly reinvested back into services which benefit you, including our independent Advice Centre.

We have your back. We will represent your interests at all levels - be it through campaigning on issues that matter to you from study space to tuition fees, or giving you advice on any issues that may arise.

We exist to ensure that you have a fun time, but also to push for progressive change at Warwick and beyond. I can't wait for you to be a part of that. Take a look through this guide for more info about everything we offer. If there's any way we can help improve your time here, please get in touch, we're here for you!"

**Contact me:**  
[president@warwicksu.com](mailto:president@warwicksu.com)

## Follow us



[facebook.com/warwicksu](https://facebook.com/warwicksu)

Official 2018/19 Facebook group:

[facebook.com/groups/warwickfreshers2018/](https://facebook.com/groups/warwickfreshers2018/)



[@warwicksu](https://twitter.com/warwicksu)



[@warwicksuofficial](https://www.instagram.com/warwicksuofficial)

### Get In Touch

Email: [enquiries@warwicksu.com](mailto:enquiries@warwicksu.com)

Telephone: 02476 572777

## Find us

We're based right in the heart of campus, with two buildings opposite Warwick Arts Centre and next to the Piazza. In the SU HQ building (above Rootes Grocery Store), you can find our Student Officer and Staff teams, Reception services, our independent Advice Centre and Xananas restaurant. All of our other outlets are in the adjacent building. You can't miss us!

### Warwick SU App

Download the Warwick SU App to stay up to date with news and event info throughout the year! [warwicksu.com/app](https://warwicksu.com/app)

# ALWAYS SOMETHING FOR YOU


This is your guide to everything your Students' Union can do for you. Read on to learn more about your SU, get to know your elected Officers and discover the kind of events you can expect to see during Welcome Week 2018!

As well as finding out how to get involved in clubs and societies, there are important sections on where to go for support on a wide range of services such as health and wellbeing, academic support, housing, democracy, job and volunteering opportunities.

## Run by students, for students

Each year, the student body elects seven Student Officers, who take a year out to represent you and the issues you care about. This year's Student Officer team is as follows:

### Your elected Student Officer team for 2018-19



**LIAM JACKSON**  
SU President  
[president@warwicksu.com](mailto:president@warwicksu.com)

**LARISSA KENNEDY**  
Education Officer  
[education@warwicksu.com](mailto:education@warwicksu.com)

**ELLIE KING**  
Postgraduate Officer  
[postgrads@warwicksu.com](mailto:postgrads@warwicksu.com)

**BEN NEWSHAM**  
Democracy & Development Officer  
[ddo@warwicksu.com](mailto:ddo@warwicksu.com)

**LEONARDO PALMA CARRANZA**  
Societies Officer  
[societies@warwicksu.com](mailto:societies@warwicksu.com)

**JEMMA ANSELL**  
Welfare & Campaigns Officer  
[welfare@warwicksu.com](mailto:welfare@warwicksu.com)

**BALRAJ DHINGRA**  
Sports Officer  
[sports@warwicksu.com](mailto:sports@warwicksu.com)

Your Student Officers are backed up by a team of **Part-Time Officers**, who work on behalf of various different student communities to provide support and representation for students at every level.

Disabled Students' Officer: Melissa Martin  
Ethnic Minorities Officer: Maatin Adewunmi  
Women's Officer: Emma Coleman  
LGBTUA+ Officer: Josh Johnson  
Trans Students' Officer: Alex Lythall  
Environment and Ethics Officer: Keir Lawson

International Students' Officer (EU):  
to be elected in Autumn  
International Students' Officer (non-EU):  
to be elected in Autumn  
Part-Time and Mature Students' Officer:  
to be elected in Autumn

Find out more about this year's team at [warwicksu.com/democracy/officers/parttime/](http://warwicksu.com/democracy/officers/parttime/)



# Checklist

- Before you arrive...
- When you get here...



When you enrol online

Make sure you tick the "YES" box on the University's enrolment screen to let us have your information – that way, we can keep you informed about everything your SU does, support you when you need it and help make your student experience as good as it can be!

Follow us on

Instagram

**@warwicksuofficial**

and join the official Freshers Facebook group for all the latest updates:

**facebook.com/groups/warwickfreshers2018/**

Download

the SU App to keep up to date throughout the year.

**warwicksu/app**



Buy tickets for our Freshers event programme and Term 1 events via **[tickets.warwicksu.com](http://tickets.warwicksu.com)**

We'll publicise the date tickets will go on sale on our Freshers Facebook group - don't leave it too late to buy yours, as many will sell out in advance!



Visit the **Welcome Fair** in the SU on Saturday or Sunday of Welcome Weekend to pick up a **free** goody bag!

Buy your souvenir Welcome Party T-shirt for £5 from the stall at the top of the Piazza

It gets you into that night's MTV Welcome Party!





Look out for the **Welcome Helpers** and Student Officers around campus

They'll be able to answer any questions or worries you may help!



### Collect your **University Card**

with your Accommodation keys – you'll need this to get into events and use as ID around campus.

Check out the **Societies Fair** on Monday and Tuesday to see what's on offer in terms of extra-curricular activities.



Make the most of it!



### Visit the **Make Your Mark! Fair** on Thursday

to find out more about how you can get involved in SU democracy, campaigning, fundraising and volunteering-based activities.

Head to the **Sports Fair** on Wednesday to join one of our many sports clubs, and on Friday get involved in our **FREE Sports Day** at venues across campus!



# Welcome week

## Welcome Weekend

SATURDAY		SUNDAY		MONDAY	
SEPTEMBER	22	SEPTEMBER	23	SEPTEMBER	24
<b>SU Welcome Fair</b> SU Atrium and Piazza, 11:00-17:00		<b>SU Welcome Fair</b> SU Atrium and Piazza, 11:00-17:00		<b>Societies Fair</b> Sports Centre, 10:00-16:30	
<b>Club MTV Welcome Party</b> Copper Rooms 21:00-01:00		<b>Club MTV Welcome Party</b> Copper Rooms 21:00-01:00		<b>SU Indoor Market</b> SU Atrium, 10:00-16:30	
		<p><b>** T-Shirts to get you entry into the Club MTV Welcome Party (before 11pm) on either the Saturday or Sunday night will be on sale for £5 (cash only please) on the Piazza from 12 Noon on both the Saturday and the Sunday. Limited numbers are available, so make sure you snap one up!**</b></p>		<b>FOAM PARTY</b> Copper Rooms, 22:00-02:00 Clean up your act! We will be shipping in the foam cannons to cover The Copper Rooms in swathes of the bubbly stuff, all to a banging soundtrack provided by our guest DJs.	



FRIDAY		SATURDAY		SUNDAY	
SEPTEMBER	28	SEPTEMBER	29	SEPTEMBER	30
<b>Sports Day</b> Various venues across campus, 11:00-16:30		<b>Inflatable Fun Day</b> Piazza, 11:00-16:30		<b>BBQ on the Piazza with film screening</b> Piazza from 18:30	
<b>Retro Video Games Day</b> Copper Rooms & SU Atrium, 13:00-17:00		<b>LGBT+ meet and greet</b> Room 2, SUHQ, 12:00-13:30		<b>COMEDY SOCIETY PRESENTS</b> Copper Rooms, 19:00-23:00 A top bill of up and coming stand-up talent to round out your week. Full line-up deets coming on the website soon!	
<b>Pronoun Badge Making</b> Student Work Zone, SUHQ, 13:00-16:00		<b>FRESHERS PARTY</b> Copper Rooms, 21:00-02:00 It's the big one! Get your glad rags on and get ready to throw some serious shapes as we bring you the biggest event of the year. Expect massive headline acts, bands and guest DJs. This is the centrepiece of the Freshers experience here at Warwick SU, selling out each year - make sure you buy your ticket well in advance if you don't want to miss out!			
Event To Be Confirmed! Details to follow on our Freshers Facebook page soon!					

Whatever day you arrive on campus, there will be a warm welcome from your Student Officer Team and all at the SU, with plenty of events and activities taking place to get involved in.

For full Welcome Week programme details visit: [warwick.ac.uk/students/welcome](http://warwick.ac.uk/students/welcome)

## TUESDAY

SEPTEMBER 25

### Societies Fair

Sports Centre, 10:00-16:30

### Social for Commuting Students

The Graduate, 15:00-17:00

### Meet and Eat

The Dirty Duck, 14:00-16:00

### PG Quiz

The Graduate, 19:00-22:00

### Musical Bingo

The Dirty Duck, 22:00-00:00

### AVALANCHE

Copper Rooms, 22:00-03:00

Warwick Snow take over The Copper Rooms for their annual night of carnage, featuring special guests and some seriously filthy bassline action.

## MONDAY

SEPTEMBER 01

### SU Indoor Market

SU Atrium, 10:00-16:30

### HALL WARS

SU Atrium, 22:00-02:00

Pride, honour and - most importantly - bragging rights are at stake as you represent your hall in a series of epic activities to see who'll be crowned Hall Wars Champion 2018. Who's going to knock Rootes off the top spot...?



## WEDNESDAY

SEPTEMBER 26

### Sports Fair

Sports Centre, 12:00-18:00

### Living at University Fair

The Oculus, 13:00-17:00

### SU Indoor Market

SU Atrium, 10:00-17:00

### Meet and Eat

The Dirty Duck, 14:00-16:00

### Social for Part-Time & Mature Students

The Graduate, 15:00-17:00

### Quackstar Karaoke

The Dirty Duck, 22:00-00:00

## THURSDAY

SEPTEMBER 27

### Make Your Mark! Fair

SU Atrium, 10:00-16:00

### Social for Parents & Carers

The Graduate, 15:00-17:00

### Disabled Students Meet and Greet

The Dirty Duck, 18:00

### Accessible Campus Tour

From the Piazza, 17:00

### PLAYLIST

Copper Rooms, 22:30-03:00

Delivering the biggest and best in dance music and DnB, The Copper Rooms will host acts sure to take the roof off the place and get you in the mood for the weekend!

## TICKET INFO

### FRESHERS PASS

This pass covers every SU-run Freshers event detailed above in the pink boxes, (plus, as an added bonus, the Urban Festival on 4th October and Paint Party in Week 10!), thus saving you a tidy sum on overall ticket prices if you want to try a bit of everything.

LIMITED NUMBERS ARE AVAILABLE - KEEP YOUR EYES ON [WARWICKSU.COM](http://WARWICKSU.COM) FOR RELEASE DATE!

### ANNUAL PASS

For the super-hardcore, there's the Annual Pass for £130. This gets you into every SU promoted event in The Copper Rooms for the entire academic year, potentially saving you £100s on clubbing, gigs and entertainment! Again, please note that LIMITED NUMBERS ARE AVAILABLE.

Join the Official SU Freshers Facebook group for full details of on-sale dates as soon as they're confirmed!

\* T&Cs apply.



Visit [warwick-su.com/events](http://warwick-su.com/events) for details  
of all events or download the SU App

# Socialising

When it comes to regular socialising on campus, the SU offers everything from student club nights to events that are organised by one of our many societies featuring live bands, theatre, comedy, sport and dance. There's always something interesting going on – and don't forget that students can also book out our venue, **THE COPPER ROOMS**, to host their own events!



Warwick SU's nightclub,  
home to live gigs and some  
of the best student events  
anywhere around.

Here are just a few of the regular events we run throughout the year...



A world of guilty pleasures for a wild Wednesday night out as resident DJ Disco Dave brings the cheese each and every week. Love it or hate it, you'll be there!

## SKOOL DAYZ

Act your shoe-size, not your age as we relive the best (and worst!) tunes from your misspent youth. Upstairs, there's hip-hop and breakbeats for those who consider themselves 'too cool for school'!



Our weekly house music event in The Terrace Bar offers a range of delicious 'mocktails' alongside the regular cocktail menu!

## Juicy

The biggest RnB, Hip Hop and UK Urban beats. Juicy promises the ultimate experience of fresh and classic throwbacks, as well as an extensive cocktail menu to tantalise your tastebuds.

## Prefer to go alcohol-free...?

Of course, you don't have to drink in order to have a good time. In addition to a wide variety of society-run events, we host a range of activities which cater to all students, regardless of whether or not you consume alcohol:

### CLEVERDUCKS PUB QUIZ

Get your fix of weekly trivia while taking on your fellow students every Thursday during term-time in The Dirty Duck – it costs just £2 entry per team!

### MUSICAL BINGO

Become 'Top of the Pops' with our interactive bingo game in The Dirty Duck. Check the different songs off on your card for a chance to win a prize!

### COFFEE HOUSE SESSIONS

Check out the finest up & coming acoustic talent in a relaxed afternoon setting as Curiosity hosts a selection of musical acts hand-picked by national tastemakers.

### QUACKSTAR KARAOKE

Voice of an angel or honk of a duck? There's only one way to find out as we invite you up onto The Dirty Duck stage to warble your favourite hits every Wednesday night!



# Food and Drink

---

Warwick SU is proud to run some of the best places to eat and drink on campus. Whether you're after a cuppa and a cake between lectures or a sizzling fajita dinner, there's something to suit all price tags and appetites. Vegetarian, vegan and gluten-free options are available in all outlets – just ask a member of staff for details.

---

**Not only are we one of the cheapest places to eat on campus, everything spent in our outlets gets directly reinvested back into services which benefit students – meaning that you get so much more for your money here at the SU!**



*"Throughout the chaos that was my first few years at university, The Bread Oven has been there to provide consistent high quality meals packed into baguettes... you have remained the highlight of my week from start to end of every term – thank you Broven, and may your bread forever be tasty!"*



## THE BREAD OVEN

The Bread Oven serves freshly-baked baguettes with your choice of fillings from a vast deli, plus delicious made-to-order salad boxes. Providing an ever-changing selection of hot fillings and weekly specials, drinks, chocolate, crisps, cookies, yoghurts and fresh fruit can then be added to make up a great value Meal Deal!  
[warwicksu.com/breadoven](http://warwicksu.com/breadoven)

---

## CURIOSITEA.

Our quirky vintage tea shop is the perfect antidote to high street chains. We offer something for everyone, from loose-leaf teas and coffees to cake, paninis and milkshakes. Our fresh fruit smoothies are blended to order, and we have a huge selection of loaf cakes, muffins and brownies including the best vegan and gluten-free cakes we've ever tasted!  
[warwicksu.com/curiositea](http://warwicksu.com/curiositea)

---

## The Dirty Duck

All-round student favourite 'The Duck' is the SU's traditional pub. The home of real ale on campus, its warm, friendly atmosphere and hearty food choice make it the perfect place to meet up with friends and relax. In addition to niche beers, wines, ciders and soft drinks, we serve a variety of tasty pub dishes, as well as hosting regular quiz, musical bingo and karaoke nights!  
[warwicksu.com/thedirtyduck](http://warwicksu.com/thedirtyduck)

---

## the terrace bar

The view over the entire Piazza from the Terrace balcony, together with an expertly-stocked bar, makes The Terrace Bar the perfect place to spend your evenings. Our extended 'Bus Stop' happy hour brings you the cheapest early-evening drinks on campus, while regular events and guaranteed good tunes keep the party going 'til late. Don't forget to sample our tasty cocktail menu!  
[warwicksu.com/terracebar](http://warwicksu.com/terracebar)

---

## xananas RESTAURANT

Located in the SUHQ building (and pronounced "Sha-na-nas", in case you were wondering!), Xananas is our stylish restaurant. From early morning until late evening, our chefs serve a freshly prepared array of breakfasts, light bites, main meals and tempting desserts. Seasonal specials and themed menus complement our impressive selection of premium beers, wines, fresh coffees and cold drinks  
[warwicksu.com/xananas](http://warwicksu.com/xananas)



# Societies

Discover what you love



Our student-run Societies bring together over 10,000 students who are interested in or care about a certain issue or activity, and they are a fantastic way to make friends, pursue existing interests or try something new. For many students, societies are at the very heart of the university experience – who knows, they may end up changing your life!



Leonardo Palma Carenza  
Societies Officer

*"Societies will provide some of the most memorable experiences you'll have during your time here. I oversee the 250+ societies at Warwick and all of the amazing work they do – if you need help setting up an event, need advice on the running of your society or even want to start a new one, come and see me during the year!"*

**Contact me: [societies@warwicksu.com](mailto:societies@warwicksu.com)**

**For more information, visit [warwicksu.com/societies](http://warwicksu.com/societies)**



**Download the SU App to find out more about all of our Societies, then come along to the Societies Fair on Monday and Tuesday of Welcome Week to meet current members, see what's on offer and sign up!**

## Support, friendship, community

Your time at university is about so much more than just your studies. By getting involved with extra-curricular activities, the opportunities for socialising, support and participation are endless!

## Start or run a Society

We have more societies than any other Students' Union in the country – however, if there isn't one that caters to your particular interests, feel free to start your own! Running for a Society Exec position in Term 2 will get you dealing with budgets, organising events and picking up skills you won't get from just doing your degree.

## Creative Warwick

Creative Warwick is a campus-wide celebration of the 250+ student societies at Warwick. Led by the Students' Union in partnership with Warwick Arts

**creative**  
warwick

Centre and the University of Warwick, the campaign showcases all the incredible things our societies get up to throughout the year and culminates in the annual Warwick Fringe Festival! Find out more at [warwicksu.com/creativewarwick](http://warwicksu.com/creativewarwick)

## Membership fees

Societies are supported and administered by the SU – and, as such, there is a £19 annual charge to join the Societies Federation (£10 for Postgraduates) to help us provide all the funding and infrastructure required.

Once you've paid the SU's Societies Federation membership fee, you can join as many societies as you like – most usually charge around £3 per year for membership, though some are free and several are exempt from the Societies Federation fee.

## Online Societies Directory

Our societies cover everything from Academia, Activities & Games, Campaigning, Culture, Film & Media, Food & Drink, Music Appreciation, Performance, Religion & Belief, and Welfare, Charity & Action. Check out the full range online at [warwicksu.com/societies!](http://warwicksu.com/societies!)







This campaign is working to make sport at Warwick inclusive, diverse and accessible for students of all abilities and identities. Find out

how we're reshaping sport at [warwicksu.com/reshapingsport](http://warwicksu.com/reshapingsport)

# Sports Clubs

All of the SU's 65+ Sports Clubs are student-run and form a massive part of our sporting community, with over 5000 individual members joining each year. Remember, whether you're competing in BUCS and Varsity or just joining to meet new people, everyone is part of Team Warwick!



**Don't forget to visit the Sports Fair on Wednesday of Welcome Week to see what's on offer, then check out the range of FREE taster sessions at our Sports Day on Friday!**

The University of Warwick also offers a huge variety of sporting activities with exceptional facilities all over campus, with our brand new purpose-built Sports Centre opening soon.

*"Sport has had a huge impact on my time as a student, and my job as Sports Officer is to look after our 65 student-run clubs here at Warwick. There really is something for everyone, so make sure you check out what's on offer and get stuck in – with social, charity endeavours and tours, it's about much more than just playing and competing!"*



Balraj Dinghra  
Sports Officer

**Contact me: [sports@warwicksu.com](mailto:sports@warwicksu.com)**

**For more information, visit [warwicksu.com/sport](http://warwicksu.com/sport)**

## Stay active

Whether you're a seasoned pro or a complete beginner, there's bound to be a Sports Club here at Warwick for you! Alternatively, there are plenty of opportunities for a casual get-together with friends, while the Active programme also runs a variety of classes and sessions throughout the year.

## Represent your university

Many of our clubs compete every Wednesday afternoon during term-time in the **British Universities and Colleges Sport (BUCS)** leagues. In Term 2, Warwick's Sports Clubs also square off against our arch-rivals from Coventry University in the annual **Varsity** tournament – to date, **#TeamWarwick** remain undefeated!

## Make friends

In addition to weekly fixtures, training sessions, socials and big calendar events, many Sports Clubs put on their own trips and international tours. These are open to all members and differ each year. In Term 3, the Students' Union also celebrates our students' annual sporting achievements at the prestigious **Sports Ball**.

## Mental Health and Wellbeing programme

Free for all students and staff members, Warwick Sport run weekly stress-buster and yoga for study sessions to help you master your academic year with ease.

## Events

Every first-year student, whether UG or PG, is entitled to free access to over 23 different Rock Up and Play sports and activities on a weekly basis.

## Memberships

Take your sport a step further and become part of Team Warwick by purchasing your club pass to join a huge range of on-campus sports clubs. Warwick Sport's £55 club pass gives you access to facilities for training and matches, as well as development opportunities and personalised support from their dedicated Club Development team.

From here, you'll need to purchase membership to the SU's Sports Federation (£32) to be able to sign-up to join as many Students' Union sports clubs as you like! Find out more about the huge range of sports clubs you can join at [warwicksu.com/sports/clubs/](http://warwicksu.com/sports/clubs/)

Alternatively, explore the wider range of Warwick Sport memberships from Swimming to Gym, Tennis and Climbing, or gain access to them all with an all-inclusive membership. Find out more at: <https://warwick.ac.uk/sport>





# Welcome to Warwick Students' Union

#We

TRAN  
AWARE  
WEE

SKOOL  
DAYZ  
Act your chie size,  
not your age

mixology  
The perfect blend of cocktails and beats



Always  
some  
for

yo



Make Your Mark  
and Volunteerin

LGBTUA+  
HISTORY  
MONTH

warwick  
fringe festival

ASEXUAL  
AWARENESS  
WEEK

QUICKSTAR  
KARAOKE

THIS  
GIRL  
CAN

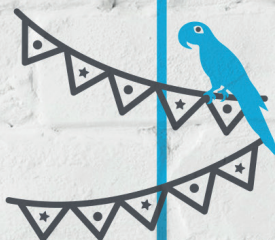
HOUSING  
DAY

Mental Health  
Awareness Week



ARE YOU  
OK?

Pride Week



THE  
BREAD  
OVEN

Join a Society at the Societies Fair





GetConsent

NS  
NESS  
EK

SPORTS  
DAY

ys  
thing

ou



Graduation Ball



xananas  
RESTAURANT

! Fair  
g Fairs



MOVING OUT THE  
GREENER WAY

Reshaping  
Sport

CURIOSITEA

ISLAMOPHOBIA  
AWARENESS  
MONTH

*Jurcy*

All  
Student Meeting  
& Referenda



the  
terrace bar

BLACK  
HISTORY  
MONTH



International  
Women's Week

Club MTV

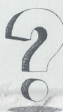


Welcome  
and Freshers  
Parties

creative  
warwick



HOLOCAUST  
MEMORIAL  
DAY



PG QUIZ



Real Ale  
Festival



ANNUAL  
GENERAL  
MEETING



Apply for a  
part-time job  
at the  
Students' Union

The  
Dirty  
Duck

nus  
extra

Your student discount card

TEAM WARWICK



so much more  
for your money  
here at the **su**



# Helping navigate the challenges of student life

We hope you have a fantastic time studying at Warwick – however, questions or problems do crop up from time to time, and we're here to help you out when they do.

*"I work closely with our Advice Centre and the University's Student Support Services to make sure that there's always help and support available if things go wrong for any reason. I also head up the campaigning side of the SU, so if there's an issue you're passionate about or something you want to change, please do get in touch!"*

**Contact me: [welfare@warwicksu.com](mailto:welfare@warwicksu.com)**

**For more information, visit [warwicksu.com/advice](http://warwicksu.com/advice)**



## Students' Union Advice Centre

Our Advice Centre is independent from the University, and offers a free and confidential service for all Warwick students. Whether your worry is big or small, or you just don't know who to speak to, our experienced team will be able to either help answer your question or signpost you to someone else. Our most common types of enquiries are about:

**Academic appeals**

**Advice for international students**

**Complaints and disciplinary proceedings**

**Funding and finances**

**Housing and accommodation**

**Personal wellbeing**

**University-related problems**

The SU Advice Centre is on the top floor of SUHQ.

**T: 024 765 72824 E: [advice@warwicksu.com](mailto:advice@warwicksu.com)**

## Housing Day

There are many myths surrounding off-campus accommodation, which mean that students often feel pressured into signing a contract. In November each year, we hold a Housing Day event where you can come along and get detailed information about your options so that you can make an informed choice.



## Living at University Fair

Come along to the Fair on the Wednesday afternoon of Welcome Week. There will be heaps of practical help, advice and workshops to help to settle in to student life.

## We Get Consent

Together, as a community, we must strive to make our campus and local area as safe and inclusive as possible. Find out more at: [warwicksu.com/consent](http://warwicksu.com/consent)

## Liberation Communities

Are you an LGBTUA+ student, student of colour, student with a disability or woman student? Find out more about your communities at: [warwicksu.com/communities](http://warwicksu.com/communities)

---

## Sexual Health Clinics

Drop-in Sexual Health Clinics take place throughout each term within the main SU building. The clinics provide free and confidential sexual health checks for transmitted infections, plus advice on safe sex practices. It's non-invasive and there's no need to make an appointment – just turn up on the day!

## Students with Disabilities

Run by the University, Disability Services is the first place to look for help with a range of disability-related issues at Warwick. Help and support is also available through our Advice Centre: [warwicksu.com/advice/disabledstudents/](http://warwicksu.com/advice/disabledstudents/)

**T: 02476 150641** **E: [disability@warwick.ac.uk](mailto:disability@warwick.ac.uk)**

---

At the Students' Union, Warwick Enable is a dedicated society for disabled students, their friends, allies, enablers and carers, while the Disabled Students' Officer is elected to help with signposting and enquiries.

---





# Getting the most from your degree

---

We're here to ensure that all students at Warwick are able to fulfil their academic and personal potential. The SU is the best mechanism for getting your views heard, enabling you to play an active role in your education.

---

## **Empowering students**

As the independent voice of Warwick students, we exist to represent your views to your academic department, the University and even the government. In addition to campaigning on local and national issues relevant to students, we're here to fight for your rights. Remember, our collective voice is much stronger than a lone one!

## **Academic Representation**

The SU has over 800 elected Course Reps representing students in every department and on each course. They are the students' voice on Student Staff Liaison Committees (SSLCs), ensuring that students' views are listened to on issues ranging from feedback, course costs, teaching space and the quality of their academic experience.

**We will be recruiting Course Reps for the 2018-19 academic year during Term 1.**

**For more info about becoming a Course Rep, visit [warwicksu.com/sslc](http://warwicksu.com/sslc)**



*"I am your lead representative on all academic and study issues for the 2018-19 academic year. I oversee the SU's Course Rep system and sit on all the University's main education boards to ensure that students' interests are at the heart of everything they do. Please feel free to get in touch if you have any questions or problems relating to your education!"*

**Contact me: [education@warwicksu.com](mailto:education@warwicksu.com)**



Larissa Kennedy  
Education Officer

*"I am the elected voice of Warwick's 9000+ Postgraduate students, standing up for your interests and making sure that postgrads are an active and respected part of the university community. I am also here to help postgrads get the most out of their time at Warwick through social and extra-curricular activities."*

**Contact me: [postgrads@warwicksu.com](mailto:postgrads@warwicksu.com)**





Ellie King  
Postgraduate Officer

**For more information, visit [warwicksu.com/education](http://warwicksu.com/education) and [warwicksu.com/postgrads](http://warwicksu.com/postgrads)**



## Recent SU wins for students have included...

-  **Securing the opening of a year-round 24-hour library on campus**
-  **Securing a lecture-free Welcome Week for new students**
-  **Halting a tuition fee rise for current students**
-  **Securing more study space on campus**
-  **Fighting the government's Higher Education reforms**
-  **Standing up for the rights of postgraduate students who teach**



# Student Democracy

Every Students' Union in the country is run directly by its members – YOU. Any student can get involved, and every student has an equal say. We use democratic processes at the SU to reach decisions about what we campaign on and the services we offer to students.

## SU Policy

Policy represents the 'collective voice' of the student body and is used to enact change on issues that are important to students, both through internal resolutions within the Students' Union and by mandating the SU Officers to lobby externally (e.g. University, local councils, government) for the change students want to see!

## Student Council

At least 5 times a year Student Council meet to hold Officers to account on their manifesto promises, renew policy and help send policy to All Student Votes. Student Council is made up of elected student representatives including Student Officers, Liberation & Diversity Officers and SU Exec members. Any student can attend Student Council and contribute to the discussion.

## All Student Votes

Once a term, we hold an All Student Vote to discuss policy motions submitted for consideration by the student body as a whole. Any student can attend the meeting, raise issues and debate! Following this, the motions are put to an all-student vote online in an SU Referenda, and successful motions then become SU policy.

## SU Execs

Our elected SU Executive Committees provide student oversight on all the main areas of the SU's operations - Democracy, Development, Education, Postgraduate issues, Welfare, Liberation & Diversity, Sports and Societies. Get involved by running for a position in this year's Autumn Elections!

## Elections

Twice a year (once in the Autumn Term and once in the Spring Term), the student body elects a series of student representatives to work on their behalf at the Students' Union. From Faculty Reps, Exec Members and NUS delegates to Part-Time Officers and full-time Student Officers, these positions represent your chance to make your mark on student life!

1985

Future Grammy Award-winners R.E.M. perform live at the SU as part of their *Fables of the Reconstruction* world tour.

**R.E.M.**

1998

The new SU building, Union North (later renamed 'SUHQ') is officially opened, along with Xananas restaurant.

1993

On their way to becoming the biggest band in Britain, OASIS perform at an event called 'The WhipRound', where students tip the headliner based on how much they liked their performance.

**oasis**

2000

Several hundred students occupy the Campus over the introduction of tuition fees by the Blair government.

## Democracy & Development Officer

### Ben Newsham

*"I oversee of our commercial operations to make sure our services provide the best value-for-money possible to students, as well as ensuring that our democratic processes are transparent and accessible. Make sure you have your say in how your Union is run by participating in Referenda and Officer Elections – decisions are made by those who show up!"*

Contact me: [ddo@warwicksu.com](mailto:ddo@warwicksu.com)

For more information, visit [warwicksu.com/democracy](http://warwicksu.com/democracy)



Ben Newsham  
D & D Officer

**Warwick Students' Union** is the main representative body for 25,000+ students at the University of Warwick. *Here's just a few of the key milestone events from our history...*

2004

The first-ever Warwick Students Arts festival (WSAF) takes place, with 50 student acts performing over 2 days.



2004

Up-and-coming singer AMY WINEHOUSE opens the bill at our summer ball, The Final Fling.



2008

The SU undergoes an £11million refurbishment.



2009

The Copper Rooms, Bread Oven and The Dirty Duck open.



2010

Curiositea and The Terrace Bar open.



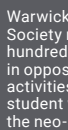
2014

Warwick Anti-Racism Society rallies several hundred students in opposition to the activities of a fascist student who led the neo-Nazi group National Action. The student left Warwick shortly afterwards.



2014

A small sit-in at Senate House is broken up by police as students are sprayed with CS gas and threatened with Tasers. The ensuing 1000-strong "Cops Off Campus" demonstration leads to an 8-day occupation of the Rootes Building.



2015

Student group Fossil Free Warwick succeeds in getting the University to divest its holdings in fossil fuel companies, following a two-year campaign exposing the industry's role in perpetuating climate change.



2017

After a decade of campaigning, the SU secures a lecture-free Welcome Week for students arriving at the University.



How will **YOU** help write the next chapter in SU history...?





# Other Opportunities

## Campaigning

We help to facilitate campaigning here on campus through training, support and networking opportunities. If you are passionate about making a positive difference, be it big or small, please get involved!

For more information, visit [warwicksu.com/campaigns](http://warwicksu.com/campaigns)

## Fundraising

Student fundraising efforts generate hundreds of thousands of pounds for charity each year here at Warwick – whether you want to fundraise as an individual or as part of a society, RAG will be able to help you out!

Visit [warwicksu.com/rag](http://warwicksu.com/rag) for all the latest info and totals.

## Elected positions

It's your Union – make sure you're a part of it! There are a host of opportunities for students to run for elected positions in the SU – be that as a member of Student Council, an SU Exec or an Officer role (see the Democracy section of this guide), or an Exec position in a Sports Club or Society.

For more information, visit [warwicksu.com/democracy](http://warwicksu.com/democracy)

## Volunteering opportunities within the student community

Volunteering offers you the opportunity to make a positive difference to the student community. It's also a great way to develop new skills that are beneficial beyond your time at Warwick!

Here's a quick snapshot of the volunteering opportunities within the SU:

Advice Centre volunteers	Course Reps
Societies Execs	Student Trustees
Sports Execs	Consent Volunteers

For more information visit [warwicksu.com/about/getinvolved/](http://warwicksu.com/about/getinvolved/)

## Volunteering opportunities in the wider community

For Volunteering opportunities in the local community, whatever your interest or lecture schedule, Warwick Volunteers can find an opportunity for you.

For more information, visit [warwick.ac.uk/volunteers](http://warwick.ac.uk/volunteers)

## Jobs

We employ hundreds of part-time student staff in a range of roles from Bar Staff, Stewards and Reception Assistants to First Aiders and members of our SU Ambassador Team. All our shifts are flexible to work around your busy student schedule!

For more information, visit [warwicksu.com/jobs](http://warwicksu.com/jobs)

warwick  
arts centre

/students

# WORLD-CLASS ART & ENTERTAINMENT AT THE HEART OF CAMPUS

Find out about your exclusive student deals and employment opportunities at [warwickartscentre.co.uk/students](http://warwickartscentre.co.uk/students) or talk to a member of staff at the Arts Centre stall at Freshers' Fair.

**£6.50**  
theatre, dance and  
music tickets

**£11**  
classical music  
tickets

 Warwick Arts Centre  
 @warwickarts  
 @warwickarts

English Touring Theatre's Othello



Dead Centre's Hamnet



Tall Stories: The Canterbury Ghost



# Get involved

The student movement has historically been at the forefront of pushing for progressive social and political change, and Warwick students are no exception to this. There is a rich and extensive history of Warwick students standing up for justice, equality and rights – check out the timeline below to find out more!

## A History of Activism at Warwick University



October 4

1967

First demonstration on campus against the presence of the U.S Ambassador, who was opening Benefactors accommodation. A small number of students picket the Ambassador. Protests against the Vietnam War were reaching their peak in the UK at the time.

February 11

1970

The Files Affair begins. Students occupy the administrative building in an effort to pressure University management into granting the Students' Union a building under student-academic control. During the occupation, files are found detailing political surveillance of students and staff, in collaboration with big industrialists on the University's Council. National uproar follows, and occupations are sparked at several other universities. The first Vice Chancellor is almost forced to stand down, and a raft of reforms to Warwick's governance follow.

June 15

1974

Warwick student Kevin Gately dies at a demonstration against the fascist National Front in London, the first student death at a demonstration in the UK. Hundreds of students march in London and Coventry to commemorate him. Suspicions that the police were responsible for his death were never fully answered.



March

1975

After eight years of struggle and negotiation, an agreement for a student-controlled SU building is signed – the building which today contains The Bread Oven and The Copper Rooms.

April

1975

A three-week occupation of Senate House begins to support a rent strike which was in its fourth month, in an attempt to limit heavy rent increases. Warwick takes out a High Court Injunction and brings 500 police to campus to evict the occupation, and the rents go up.

March

1978

A campaign to force Warwick to switch from Barclays Bank over its links with apartheid, and divest from shares linked to South Africa, succeeds.







## November

1983

The SU is fined £30,000 after a riotous demonstration against the campus visit of a Thatcherite government minister, Sir Keith Joseph. A Fight the Fine campaign is launched by boycotting all University outlets on campus, succeeding in forcing Warwick to reverse the fine.

## March

2000

Several hundred students occupy over the introduction of tuition fees by the Blair government.

## January 21

2009

A nine-day sit-in in S0.21 begins over Israel's attack on Gaza, ending once the University agrees to negotiate on their demands.



## June 12

2014

Several hundred students rally by the Koan in opposition to the activities of a fascist student who led the neo-Nazi group National Action. The anti-fascist response was led by Warwick Anti-Racism Society. The student left Warwick shortly after this demonstration.

## December 3

2014

A small sit-in at Senate House is violently broken up by police as students are sprayed in the face with CS gas and threatened with Tasers. A one-thousand-strong demonstration the next day leads to an eight day occupation of the Rootes Building and a year-long political conflict with management.

## July 8

2015

Fossil Free Warwick succeeds in getting Warwick to commit to divest its holdings in fossil fuel companies after a two year campaign focused on exposing the fossil fuel industry's role in perpetuating climate change.

## December 2

2016

Warwick For Free Education occupy an entire conference building, the Slate, over civil liberties violations, the marketisation of higher education, and work casualisation at Warwick. The two-week occupation ends after the University concede to a number of their demands.

Remembering the past and looking to the future, the Students' Union remains an inherently political body. We run and help to facilitate grassroots campaigns on a range of issues both locally and nationally.

### Recent campaigns include:

#### • FIX THE FEES:

SU campaign for greater transparency and fairness on tuition fees paid by international students.

#### • #WEGETCONSENT:

A student-led campaign aimed at tackling sexual violence and harassment in our community.

#### • FOSSIL FREE:

A grassroots environmental campaign which successfully pushed the University to commit to divesting from fossil fuels.

#### • BETTER BUSES:

SU campaign for a fairer deal for students who rely on buses to get to and from campus.

If you are interested in getting involved in a campaign or even starting your own, we are here to support you, so get in touch via [campaigns@warwicksu.com](mailto:campaigns@warwicksu.com)

# FINDING YOUR WAY AROUND CAMPUS

Hopefully you'll be able to take part in a tour of campus during Welcome Week – if not, you can find a full interactive map at [warwick.ac.uk/about/visiting/maps/interactive/](http://warwick.ac.uk/about/visiting/maps/interactive/)

## ROOM NUMBERS

Confused about where you're supposed to be heading?

Room numbers on campus generally work in the following way:

- Departments or buildings are allocated a specific letter-code (for example, 'H' for Humanities, 'MS' for Maths & Stats, 'OC' for the Oculus Building)
- The floor number appears next, followed by a period (.)
- The room number on that floor is then listed after the period.

So, if you have a class scheduled in Room 21 on the Ground Floor of the Humanities Building, your room number would be H0.21. Likewise, a class taking place in Room 5 on the first floor of the Oculus would be OC1.05

## GOT A QUESTION? WE ARE HERE TO HELP!

Right now there are probably a million and one questions going through your minds, so we've put together a quick FAQ list. For all other queries, email [enquiries@warwicksu.com](mailto:enquiries@warwicksu.com) and we'll get back to you as soon as possible!

### WHAT IS THE STUDENTS' UNION?

We're a charity which exists solely to provide services to our members – from advice, representation and employability skills to food, drink and entertainment. We're completely separate from the University and don't make a profit; every penny you spend here is reinvested for your benefit.

### HOW DO I JOIN?

You're already a member! However, keep an eye out for the Societies, Sports and the Make Your Mark! Fairs in Welcome Week if you're looking to get involved in extra-curricular activities.

### WHERE DO I COLLECT MY KEYS?

It depends which accommodation block you're in. Each hall is signposted as you arrive, and you pick up your keys nearby – if in doubt, ask a Welcome Helper.



### WHERE DO I GET MY UNIVERSITY CARD?

This should be available for collection along with your Accommodation keys.

### HOW DO I BUY TICKETS FOR SU EVENTS?

These are sold online via [tickets.warwicksu.com](http://tickets.warwicksu.com) and uploaded direct to your student card. You just swipe this on the door to gain entry, so there's no need to pick up any physical tickets!



## HOW DO I GET INTO THE MTV WELCOME PARTY EVENTS?

T-shirts are available on the Piazza on the Saturday and Sunday of Welcome Weekend on a first-come, first-served basis! If you wear this on the relevant night, it doubles as your ticket. Once T-shirts have sold out, the remaining places will be available on the door for £5 until we reach capacity!



## WHAT HAPPENS IF I WANT TO CHANGE ACCOMMODATION?

The University has some provision for this, but you normally have to wait a couple of weeks. Ask at Student Accommodation Reception in Senate House or speak to your Resident Tutor to find out more.



## WHERE DO I DO MY LAUNDRY?

Most students use the Rootes Laundrette behind the main SU building, though some residences have their own facilities. Laundry cards are available from the machine outside The Bread Oven in the SU!

## DO I NEED TO BUY A BUS PASS?

If you're living on campus this year, probably not as it'll be cheaper to just buy individual tickets whenever you need to venture off-campus!

The main Bus Interchange is based in the centre of campus, next to Warwick Arts Centre. Buses run at regular intervals to each of the three closest towns and cities: Coventry, Kenilworth and Leamington Spa. There are three core bus operators:

\* National Express (which runs the 11 to Leamington via Kenilworth, 11u to Coventry via Earlsdon and the 12x service direct to Coventry City Centre). Please note that National Express services take exact change only on their buses, but are currently piloting a contactless payment system!

\* Stagecoach (which runs the U1 and U2 services to Leamington)

\* Travel de Courcey (which runs services to various local suburbs)

In addition, there is a University-run Shuttle Bus service in operation throughout the day, while Taxis are also available from the Main Bus Interchange.

## WHERE IS THE NEAREST TRAIN STATION?

Canley station is about 20-25 minutes' walk from campus, while Coventry station is a 15-20 minute bus ride away on the 12x service from campus. You can connect to Birmingham New Street (a 25-30 minute journey) via either Coventry or Canley.

Leamington Train Station is a 5-10 minute walk away from the bottom of the main high street ('The Parade') on the 11, U1 or U2 routes. From here, you can connect to Birmingham Moor Street within 30 minutes.

## "HELP!"

We hear you! If you're feeling anxious for any reason, speak to a Welcome Helper, the SU Advice Centre or member of SU staff and we'll do our best to help you out.





# Money off student stuff 24/7

Everyday



10% off  
in-store

**maplin**

connecting brilliant ideas

10% off  
**co**

25% off  
online



**Domino's**

Essentials



Qualify for an  
**amazon** student  
membership with an  
**NUS extra card**

Up to  
**10% off**  


Travel



1st year  
**free**



12% off  
your railcard

**16-25 Railcard**

26% off  
advance tickets

**national  
express**

200+ UK discounts | 3-year cards available

Get your card now

**nus.org.uk/extra**





**Domino's**

WELCOME TO UNI

BUY ONE  
GET ONE **FREE**

★ EVERY SINGLE DAY ★

VALID ON MEDIUM OR LARGE PIZZA ONLY



THE OFFICAL FOOD OF

WARWICK STUDENT LIFE

JUST USE CODE: **PIZZA241** AT THE CHECKOUT

505 FLETCHAMSTEAD HIGHWAY  
COVENTRY, CV4 9BY  
02476 717111



CLOSE FOR COLLECTION:  
12AM - 11AM MON-SUN

[/DominosPizza](#) [@Dominos\\_UK](#) [StudentsOfDominos](#) [Click](#) [Tap the app](#) [XBOX ONE](#)

\*Buy one get one free on medium & large pizza only. Valid online only. Free pizza must be equal or lesser value than the first. Not valid with any other offer. Offer can be withdrawn without notice. Available in participating stores only. Student ID required. EXP 31-5-19



**On behalf of the entire  
Students' Union Officer  
and Staff team, we look  
forward to meeting you!**

---

**"Positively impacting students' lives at Warwick and beyond"**

– Warwick SU Mission Statement

---

**Our values:**

**Student Focused – We put students at the heart of everything we do.**

**Democratic – We are representative, ethical, transparent and accountable.**

**Welcoming – We are supportive, helpful, inclusive and value diversity.**

**Enriching – We nurture students' aspirations and help them develop.**

**Independent – We are the independent voice of Warwick students.**

For more information about Warwick Students' Union, visit  
**[warwicksu.com](http://warwicksu.com)**

